

Embrace Your Destiny

Crafting Your Path to a Bright Future Career



Sandra S. Rincón
Trainer, Author, Researcher
<https://www.linkedin.com/in/sandrarincon/>

Agenda

- ✓ Introduction
- ✓ Crafting Your Path
 - Values
 - Your Why
- ✓ The Power of Networking



Introduction (10 min.)

In groups of 3 share the following

- ✓ Your current position
- ✓ How long have you worked in your current job
- ✓ Is this job part of your career path?



Your Values: Prioritize (5 min)

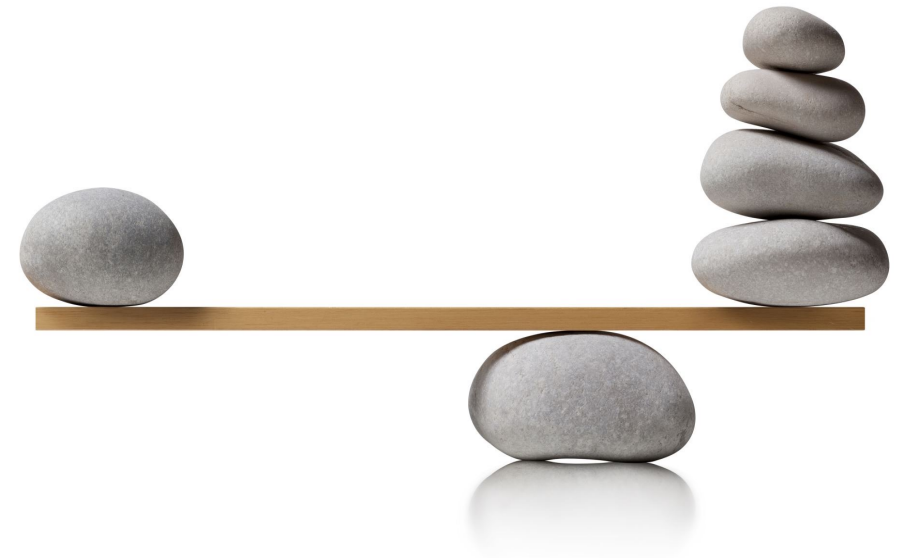
What is most important to me?

- Love: Family & Friends = community
- Health: Nutrition & physical training
- Career: success, growth, leadership
- Economic stability & independence
- Spirituality: faith, religion, philosophy
- Life long learning: new knowledge
- Safety



Make a list (5 min)

- Autonomy /Adventure
- Loyalty / Justice / Honesty
- Balance / Inner-harmony
- Service / Contribution
- Challenge / Creativity
- Humor / Optimism
- Openness / Diversity
- Assertiveness / LeadershipEtc...



Your Mission Statement (5 min)

What is your why?

❖ *To help build communities to promote diversity in innovating a more inclusive, sustainable and kinder world.*

- Love: Family, Friends, Humanity & Nature = Community
- Social Responsibility: Diversity, Equality and Inclusion
- Health & Safety
- Keep learning





In 3 - 5 Years I want to be in... (5 min)

❖ Advancement

- Alumni Relations: policy, event management, leadership
- Fundraising: annual fund, campaigns, account manager...
- Career Development: mentor, advisor...
- Communications / Social Media /Data Analytics ...
- Leadership (strategy, leading teams, leading vision)
- Other roles within the education sector:
 - teaching, international relations, curriculum development

❖ Other: Corporate alumni relations /consultancy / another sector

How Can Networks Help?

- 4th Industrial Revolution – Disruption in every sector
- Need to reinvent ourselves professionally again and again. (Yuval Harari)
- Networks help...
 - empower, inspire & reflect on our careers
 - build communities (greater cause)



Effective Networks Are...

- Trusted
- Responsive
- Diverse





Strong Ties

“Acquaintanceships that are reinforced by many mutual connections and friendships.”

By Mark Granovetter, Anthropologist



Diana Aguiar Vieira • 1st

Employability, Career & Soft skills specialist, Coach,...
Porto, Portugal

 4K followers

 95 mutual connections

 Message

View full profile



Weak Ties Are Diverse

They differ from you by:

- *Profession, Education, Location*
- *Age, Gender,*
- *Culture & Identity ... and more*

Mapping

(5 min)

Think of where you want to be/do in 3-5 years.

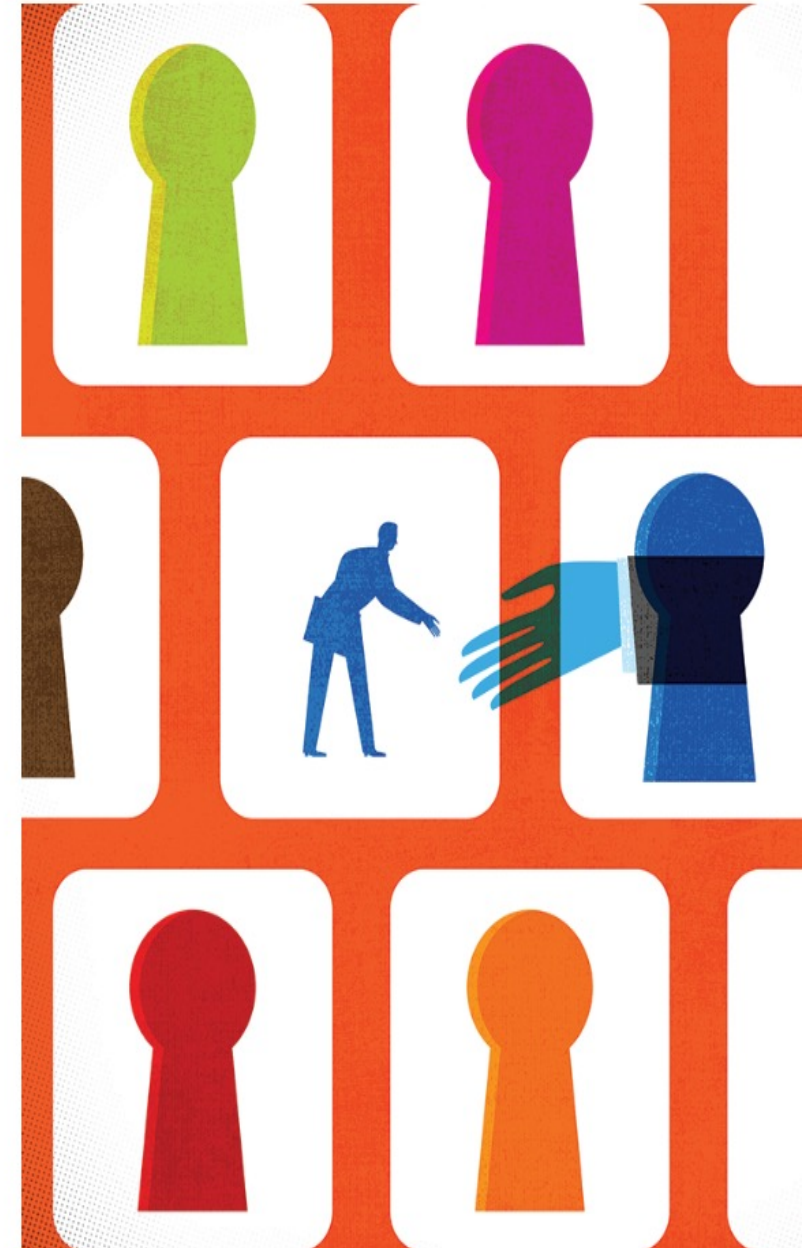
Consider your **strong** and **weak** ties.

- Mentor
- Introductions to....
- Brainstorm ideas

The Payoff of Intentional Networking

A primer for advancement professionals

By Sandra Rincón</sandra-rincon>, Andrew Shaindlin</andrew-shaindlin>
January 1, 2022



Resources: ICARE-Alumni Community

Chapter 9
Taking a Coaching Approach to Mentoring



Karen Cairney
CEO and Founder,
Cairney and Company

Karen founded Cairney and Company—a global company of innovative and creative fundraisers, strategists, communicators, researchers, trainers, and coaches.

She fundamentally believes that your people are your greatest asset and the key to achieving your goals. Her ability to bring out the best in people is a recurring theme throughout her 25 years career in Canada, the US, Asia, and the UK.

Karen is an alum of Edinburgh Napier University and Toronto Metropolitan University.



 **Episode 20: How to Thrive and Stay Relevant in a Changing World**

Listen in as host [Sandra Rincon](#) and [Nena Grceva](#), Director of Alumni Affairs at Hertie School, explore how alumni advancement professionals can thrive and stay relevant in a changing world.

8 February 32 min

 **Episode 19: Getting the Best out of Yourself and Others**

For this episode of Brite Ideas, host [Sandra Rincon](#) spoke to [Karen Cairney](#), CEO and Founder of [Cairney and Company](#)—a global company of innovative and creative fundraisers, strategists, communicators, researchers, trainers, and coaches.



**ALUMNI NETWORKS
CONNECTING
TO GLOBAL
OPPORTUNITIES**

Even for students with all the right skills and internships, connections are often key to getting a foot in the door. Alumni networks are a crucial bridge connecting international graduates not only to their first jobs, but bringing them into contact with the global challenges they will spend their careers working on. ▶

Photo: Shutterstock

[The Alumni Connection: Insights and Strategies from Experts](#)

[Brite Ideas](#)

[EAIE Forum](#)



CTU Prague
13-14 June 2024



Děkuju

Thank You

For Participating



Sandra S. Rincón

Srincon2020@gmail.com

<https://www.linkedin.com/in/sandrarincon/>